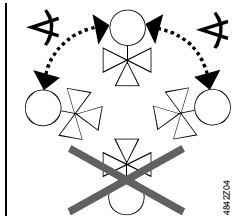


**de** Montageanleitung  
**en** Mounting instructions  
**fr** Instructions de montage  
**sv** Monteringsinstruktion  
**nl** Montage-handleiding  
**it** Istruzioni di montaggio  
**fi** Asennusohje  
**es** Instrucciones de montaje  
**da** Monteringsvejledning  
**pl** Instrukcja montażu  
**cz** Montážní návod  
**hu** Szerelési útmutató  
**el** Οδηγίες εγκατάστασης  
**ru** Инструкция по установке  
**zh** 安裝指導

**Ventile PN16**  
**Valves PN16**  
**Vannes PN16**  
**Ventiler PN16**  
**Afsluiters PN16**  
**Valvole PN16**  
**Venttiilit PN16**  
**Válvulas PN16**  
**Ventiler PN16**  
**Zawory PN16**  
**Ventily PN16**  
**Szelepek PN16**  
**Βάνες PN16**  
**Клапаны PN16**  
**阀门 PN16**

**VVI46..**  
**VXI46..**



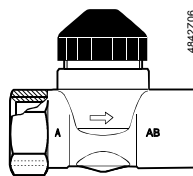
V.. + SFA.. : 2 x 85°

V.. + STA.. / STS61.. : 2 x 90°



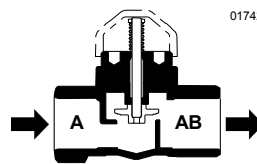
**1a**

VVI46..



4842206

**2a**

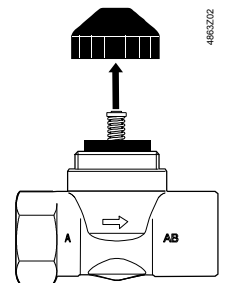


01742



A → AB = 0 ... 100 %

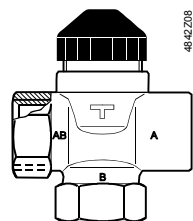
**3a**



4863202

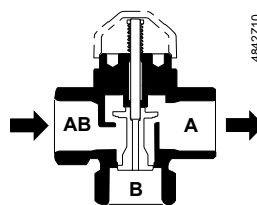
**1b**

VXI46..

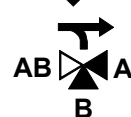


4842208

**2b**

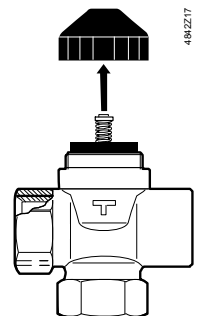


4842210



AB → A = 0 ... 100 %  
 AB → B = 70 ... 0 %

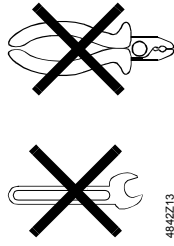
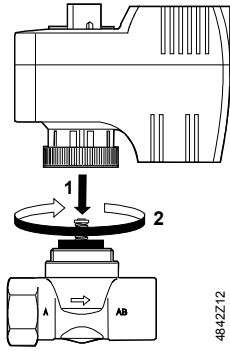
**3b**



4842217

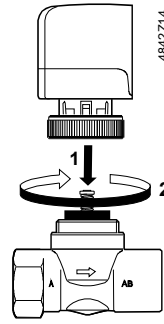
4

V..I46 + SFA..

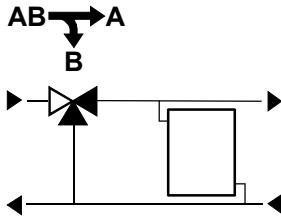


4842Z13

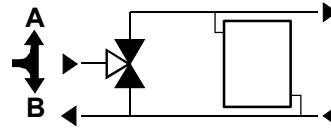
V..I46 + STA.. / STS61..



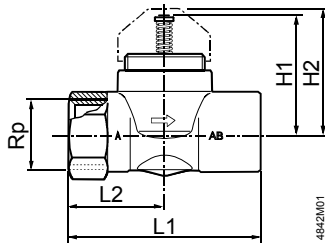
VXI46.. + SFA.. / STS61..



MXE..

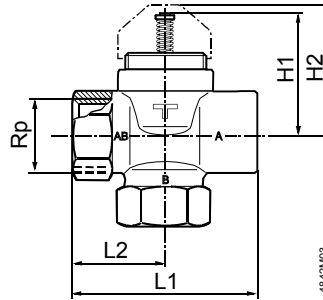


VVI46..



4842M01

VXI46..



4842M03

	DN	Rp	H1	H2	L1	L2
		[Inch]	[mm]	[mm]	[mm]	[mm]
VVI46.15	15	Rp 1/2	45,2	48	60	30
VVI46.20	20	Rp 3/4	45,2	48	65	32,5
VVI46.25	25	Rp 1	45,2	48	84	42

	DN	Rp	H1	H2	L1	L2
		[Inch]	[mm]	[mm]	[mm]	[mm]
VXI46.15	15	Rp 1/2	45,2	48	60	30
VXI46.20	20	Rp 3/4	45,2	48	65	32,5
VXI46.25	25	Rp 1	45,2	48	84	42
VXI46.25T	25	Rp 1	45,2	48	84	42